



MySQL Enterprise Brings High-Availability and Reliability to Advanced E-Learning System



Image source: University of Duisburg-Essen

CMS for E-Learning

OS:	AIX 5.3
Database:	MySQL Enterprise Server
Storage:	Sun STK 6540

“The MySQL Enterprise Monitor informs us about the health of all MySQL Servers at a glance and whether the installed replication works properly.”

Ulrich Schilling
SGV Server/Data
University of Duisburg-Essen

About the University of Duisburg-Essen

The University of Duisburg-Essen (UDE) is located in the midst of the most concentrated university landscape in Europe. With 31,000 students and 4,300 scientists and employees, it not only ranks among the ten largest universities in Germany, it is also one of the most important employers in the region.

The two-campus university in the center of the industrial Rhine-Ruhr area features a broad, internationally designed curriculum that encompasses the humanities, social sciences, economics, engineering, natural sciences and medicine. One of the University's specialties is its attractive evening and weekend programs for students with full-time day jobs.

Business Challenge

The MySQL database has been the basis of web-based applications at the University of Duisburg-Essen for the past twelve years. In that time, more than 600 databases have been developed for academic purposes, for example.

Since 2007, the University of Duisburg-Essen, the Technische Universität Dortmund and Ruhr-Universität Bochum have cooperated at different levels within the scope of the University Alliance Metropolis Ruhr (UAMR). As part of this alliance, UDE's task was to develop a joint E-learning platform to track and manage the students' compulsory courses. This system would need a database with high requirements for availability and performance.

The MySQL Solution

The University of Duisburg-Essen decided to use Moodle as the open solution for managing of electronic courses. Due to the many years of good experience, MySQL was quickly selected as the underlying database.

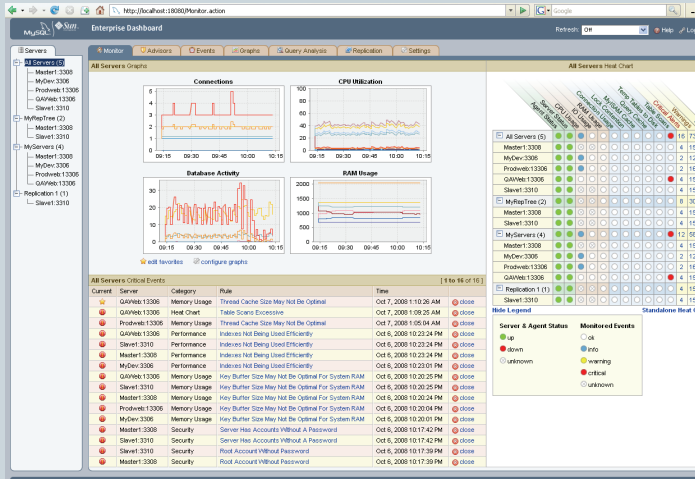
All data required for hundreds of available online courses is managed in MySQL -- including student and teacher information, course descriptions, curriculum, user activity, and results attained.

To meet the growing requirements on the database and system availability, the University of Duisburg-Essen purchased a MySQL Enterprise Unlimited subscription. MySQL replication is used to ensure reliability and data backup. The MySQL Enterprise Monitor offers important support for monitoring the system environment and identifying potential problems before they occur. MySQL Enterprise Unlimited provides the web staff at University of Duisburg-Essen with access to the qualified expertise of MySQL technical teams -- allowing them to deploy and support an unlimited number of MySQL Enterprise database servers for a low, set price.

MySQL Enterprise

Full Support & Less Risk for Your Production Database Applications

A MySQL Enterprise subscription includes the most comprehensive set of MySQL database software, services and support so your business achieves the highest levels of reliability, security and uptime.



Proactive database monitoring & advisory tools are available exclusively to MySQL Enterprise subscribers.

MySQL Enterprise includes:

- **MySQL Enterprise Server** – the most reliable, secure and up-to-date version of the world's most popular open source database
- **MySQL 24x7 Production Support** – with guaranteed response times to assist you in the development, deployment and management of your MySQL applications
- **MySQL Enterprise Monitor** – GUI-based tools that continuously monitor your database and proactively advise you on how to implement MySQL best practices, including performance tips and security alerts.

About MySQL

MySQL is the most popular open source database software in the world. Many of the world's largest and fastestgrowing organizations use MySQL to save time and money powering their high-volume Web sites, critical business systems, and packaged software. At www.mysql.com, Sun provides corporate users with commercial subscriptions and services, and actively supports the large MySQL open source developer community.

For more information about MySQL, please go to www.mysql.com/enterprise

To contact MySQL online or via telephone, please go to www.mysql.com/contact



The World's Most Popular Open Source Database